

Datasheet

→ RKSSMA15

03/09/2026



Technical data

Key actuator, maintained

Type	RKSSMA15
Series	OKTRON®-R
Rubric	Key-operated switch
Approvals	CCC, CE, UKCA, UR



→ General data

Design	Round
Operating temperature	-25 °C ... 70 °C
Panel cut-out	Ø 16.2 mm
Front bezel colour	Silver-coloured
Storage temperature	-50 °C ... 85 °C
Degree of protection front	IP65

→ Electrical data

Enclosure type information acc. to UL	Type 1 indoor
--	---------------

→ Mechanical data

Mounting position	Any
Mounting plate thickness	1,0 mm ... 5,0 mm
Switching function	Latching function

Switching position

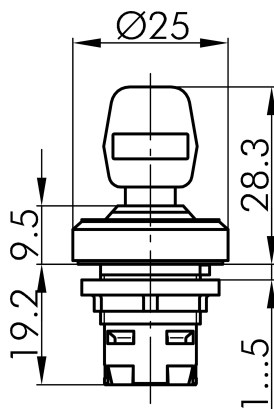
0° key removable
90° maintained, key removable

Note

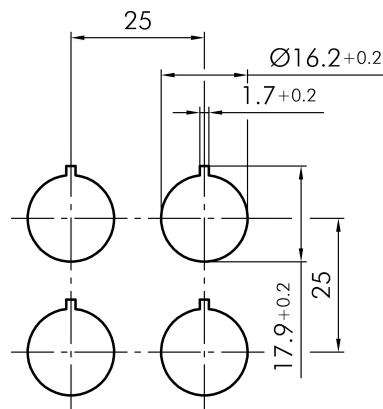
- Includes 2 keys
- Different locking possible on request

Technical drawings

→ Dimensional drawing



→ Cutout dimensions



→ Position indicator

