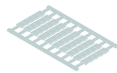


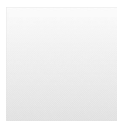
IK10BL

Description:	1000 V max. when using a partition wall IW16 between the terminals
Category:	Quick-assembly terminal blocks
Series:	Fixblock
Connection type:	screw connection, slotted screw
Positive opening:	no
Thread size:	M3.5
Storage temperature:	-40°C ... 80°C
Tightening torque:	0.8 Nm
Operating temperature:	-30°C ... 40°C
Terminal width:	8 mm
Mounting method:	top hat rail N35, EN60715 TH35
Rated cross section:	10 mm ²
solid:	0.5 ... 10 mm ²
multiple wire:	0.5 ... 10 mm ²
Rated voltage:	750 V
Rated current:	57 A

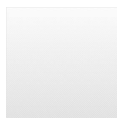
Optional accessory



Identification labels, blank 50-piece sheet HSKM80U



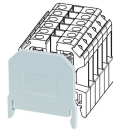
Identification labels, printed 50-piece sheet HSKM80_1-50



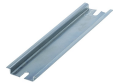
Identification labels, printed 50-piece sheet HSKM80_51-100



Insulated end section IW16



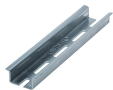
Insulated end section IW50



Top-hat rail N35-7.5 mm N35-2



Top-hat rail N35-7.5 mm, punched N35L-2



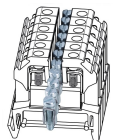
Top-hat rail N35-15 mm, punched N35L-2_15MM



End clamp bracket SK35



Jumper, 2 poles VB6-12



Jumper, 2 poles VB6-2

