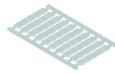


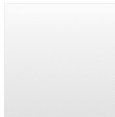
## IK120

|                        |  |
|------------------------|--|
| Category:              | Quick-assembly terminal blocks                       |
| Series:                | Fixblock   |
| Thread size:           | M10  |
| Storage temperature:   | -40°C ... 80°C                                       |
| Connection type:       | screw connection, hexagon nut for bars or cable lugs |
| Tightening torque:     | 10 Nm  |
| Operating temperature: | -30°C ... 40°C                                       |
| Terminal width:        | 48 mm  |
| Mounting method:       | top hat rail N35, EN60715 TH35                       |
| Rated cross section:   | 120 mm <sup>2</sup>                                  |
| solid:                 | 120 mm <sup>2</sup>                                  |
| multiple wire:         | 120mm <sup>2</sup>                                   |
| Rated voltage:         | 750 V  |
| Rated current:         | 269 A  |

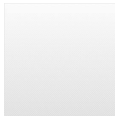
### Optional accessory



Identification labels, blank 50-piece sheet HSKM100U



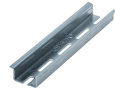
Identification labels, printed 50-piece sheet HSKM100\_1-50



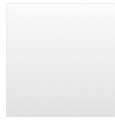
Identification labels, printed 50-piece sheet HSKM100\_51-100



Top-hat rail N35-7.5 mm N35-2



Top-hat rail N35-15 mm, punched N35L-2\_15MM



Insulating partition TW240

