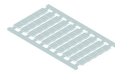


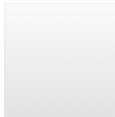
## IK16BL

Category:	Quick-assembly terminal blocks
Series:	Fixblock
Storage temperature:	-40°C ... 80°C
Tightening torque:	1.2 Nm
Operating temperature:	-30°C ... 40°C
Terminal width:	10 mm
Connection type:	screw connection, slotted screw
Positive opening:	no
Thread size:	M4
Mounting method:	top hat rail N35, EN60715 TH35
Rated cross section:	16 mm <sup>2</sup>
solid:	0.5 ... 16 mm <sup>2</sup>
multiple wire:	0.5 ... 16 mm <sup>2</sup>
Rated voltage:	750 V
Rated current:	76 A

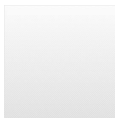
## Optional accessory



Identification labels, blank 50-piece sheet HSKM100U



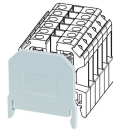
Identification labels, printed 50-piece sheet HSKM100\_1-50



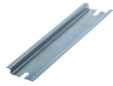
Identification labels, printed 50-piece sheet HSKM100\_51-100



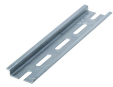
Insulated end section IW16



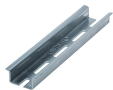
Insulated end section IW50



Top-hat rail N35-7.5 mm N35-2



Top-hat rail N35-7.5 mm, punched N35L-2



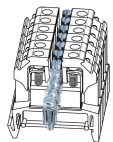
Top-hat rail N35-15 mm, punched N35L-2\_15MM



Test plug PST4



End clamp bracket SK35



Jumper, 2 poles VB16-12



Jumper, 2 poles VB16-2

