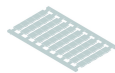


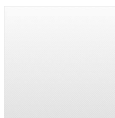
IK240

Category:	Quick-assembly terminal blocks
Series:	Fixblock
Terminal width:	58 mm
Thread size:	M12
Storage temperature:	-40°C ... 80°C
Connection type:	screw connection, hexagon nut for bars or cable lugs
Tightening torque:	14 Nm
Operating temperature:	-30°C ... 40°C
Mounting method:	top hat rail N35, EN60715 TH35
Rated cross section:	240 mm ²
solid:	240 mm ²
multiple wire:	240mm ²
Rated voltage:	750 V
Rated current:	415 A

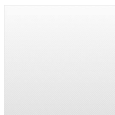
Optional accessory



Identification labels, blank 50-piece sheet HSKM100U



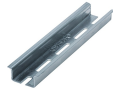
Identification labels, printed 50-piece sheet HSKM100_1-50



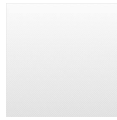
Identification labels, printed 50-piece sheet HSKM100_51-100



Top-hat rail N35-7.5 mm N35-2



Top-hat rail N35-15 mm, punched N35L-2_15MM



Insulating partition TW240

