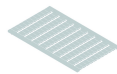


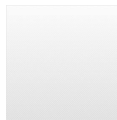
## IK25

Category:	Quick-assembly terminal blocks
Series:	Fixblock
Tightening torque:	2.5 Nm
Operating temperature:	-30°C ... 40°C
Terminal width:	12 mm
Thread size:	M6
Storage temperature:	-40°C ... 80°C
Connection type:	screw connection, slotted screw
Mounting method:	top hat rail N35, EN60715 TH35
Rated cross section:	25 mm <sup>2</sup>
solid:	10 ... 25 mm <sup>2</sup>
multiple wire:	10 ... 25 mm <sup>2</sup>
Rated voltage:	1000 V
Rated current:	101 A

## Optional accessory



Identification labels, blank 100-piece sheet HSKM60U



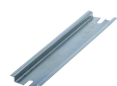
Identification labels, printed 100-piece sheet HSKM60\_1-100



Insulated end section IW50



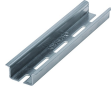
Insulated end section IW70



Top-hat rail N35-7.5 mm N35-2



Top-hat rail N35-7.5 mm, punched N35L-2



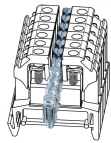
Top-hat rail N35-15 mm, punched N35L-2\_15MM



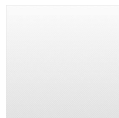
Test plug PST4



End clamp bracket SK35



Jumper, 2 poles VB25



VBU35

