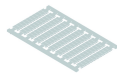


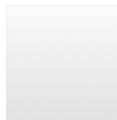
### IK3

Category:	Quick-assembly terminal blocks
Series:	Fixblock
Connection type:	screw connection, slotted screw
Tightening torque:	0.5 Nm
Operating temperature:	-30°C ... 40°C
Terminal width:	5.1 mm
Thread size:	M2.5
Storage temperature:	-40°C ... 80°C
Mounting method:	top hat rail N35, EN60715 TH35
Rated cross section:	2.5 mm <sup>2</sup>
solid:	0.5 ... 4 mm <sup>2</sup>
multiple wire:	0.5 ... 2.5 mm <sup>2</sup>
Rated voltage:	750 V
Rated current:	25 A

### Optional accessory



Identification labels, blank 100-piece sheet HSKM50U



Identification labels, printed 100-piece sheet HSKM50\_1-100



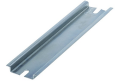
Insulating partition, large size ITW4



Insulated end section IW2



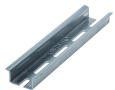
Insulated end section IW4



Top-hat rail N35-7.5 mm N35-2



Top-hat rail N35-7.5 mm, punched N35L-2



Top-hat rail N35-15 mm, punched N35L-2\_15MM



End clamp bracket SK35

