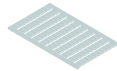


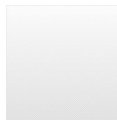
IK5

Category:	Quick-assembly terminal blocks
Series:	Fixblock
Tightening torque:	0.8 Nm
Operating temperature:	-30°C ... 40°C
Terminal width:	6 mm
Thread size:	M3
Storage temperature:	-40°C ... 80°C
Connection type:	screw connection, slotted screw
Mounting method:	top hat rail N35, EN60715 TH35
Rated cross section:	4 mm ²
solid:	0.5 ... 6 mm ²
multiple wire:	0.5 ... 4 mm ²
Rated voltage:	750 V
Rated current:	32 A

Optional accessory



Identification labels, blank 100-piece sheet HSKM60U



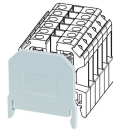
Identification labels, printed 100-piece sheet HSKM60_1-100



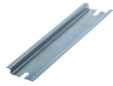
Insulating partition, large size ITW4



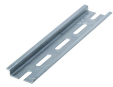
Insulated end section IW16



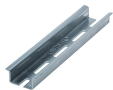
Insulated end section IW4



Top-hat rail N35-7.5 mm N35-2



Top-hat rail N35-7.5 mm, punched N35L-2



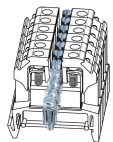
Top-hat rail N35-15 mm, punched N35L-2_15MM



Test plug PST2



End clamp bracket SK35



Jumper, 2 poles VB4-12



Jumper, 2 poles VB4-2

