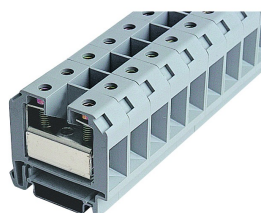


**IK51**

04.11.2014



### General Data

Type Reference	IK51
Description	Feed-through terminal, screw connection
Approvals	CE, VDE, Lloyds, UKCA, UR
Terminal type	Terminal block
Terminal width	16 mm
Mounting method	top hat rail N35, EN60715 TH35
Connection type	screw connection, hexagon socket/slotted screw
Thread size of screw connection	M6
Torque	5.6 Nm / 4 Nm (hexagon socket / slotted screw)
Rated cross section	50 mm <sup>2</sup>
Wire size (solid)	2x16/1x16 .... 50 mm <sup>2</sup>
Wire size (stranded)	2x16/1x16 .... 50 mm <sup>2</sup>
Rated voltage	1000 V
Rated current	150 A
Max. storage temperature	-40°C ... 80°C
Max. operating temperature	-30°C ... 40°C
Photo	

### Data acc. to IEC 60947-7-1

Flammability class acc. to UL94	V2
Pollution degree	3
Overvoltage category	III
Material group	I
Insulating material	PA 6.6
Stripping length	16 mm

### Data acc. to UL1059

Torque	5.6 Nm
Wire size (solid)	6-1/0 AWG



Rated voltage 600 V

Rated current 150 A

**Data acc. to UL1059**

Wire size (solid) 50 mm<sup>2</sup>

Rated voltage 1000 V

Rated current 150 A

