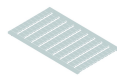


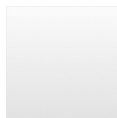
## IK51BL

Category:	Quick-assembly terminal blocks
Series:	Fixblock
Positive opening:	no
Thread size:	M6
Storage temperature:	-40°C ... 80°C
Tightening torque:	5.6 Nm / 4 Nm (hexagon socket / slotted screw)
Operating temperature:	-30°C ... 40°C
Terminal width:	16 mm
Connection type:	screw connection, hexagon socket/slotted screw
Mounting method:	top hat rail N35, EN60715 TH35
Rated cross section:	50 mm <sup>2</sup>
solid:	2x16/1x16 .... 50 mm <sup>2</sup>
multiple wire:	2x16/1x16 .... 50 mm <sup>2</sup>
Rated voltage:	750 V
Rated current:	150 A

## Optional accessory



Identification labels, blank 100-piece sheet HSKM60U



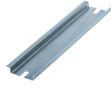
Identification labels, printed 100-piece sheet HSKM60\_1-100



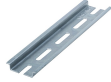
Insulated end section IW51



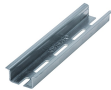
Insulated end section IW70



Top-hat rail N35-7.5 mm N35-2



Top-hat rail N35-7.5 mm, punched N35L-2



Top-hat rail N35-15 mm, punched N35L-2\_15MM



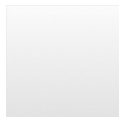
Test plug PST4



End clamp bracket SK35



Jumper, 2 poles VB35



VBU35

