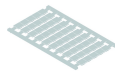


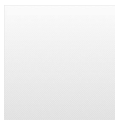
IKE51

Description:	Please follow the instructions about the electrical short-term withstand current of top hat rails.
Category:	Earth connection terminals
Series:	Fixblock
Thread size:	M6
Connection type:	screw connection, hexagon socket
Storage temperature:	-40°C ... 80°C
Tightening torque:	5.6 Nm
Terminal width:	19 mm
Operating temperature:	-30°C ... 40°C
Mounting method:	top hat rail N35, EN60715 TH35
Rated cross section:	35 mm ²
solid:	2x16/1x16 35 mm ²
multiple wire:	2x16/1x16 35 mm ²

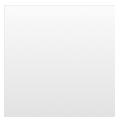
Optional accessory



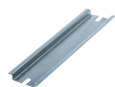
Identification labels, blank 50-piece sheet HSKM100U



Identification labels, printed 50-piece sheet HSKM100_1-50



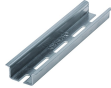
Identification labels, printed 50-piece sheet HSKM100_51-100



Top-hat rail N35-7.5 mm N35-2



Top-hat rail N35-7.5 mm, punched N35L-2



Top-hat rail N35-15 mm, punched N35L-2_15MM

