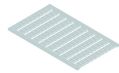


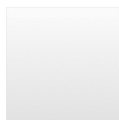
IKEPP

Description:	2-pole, PE conductor on support rail
Category:	Distribution terminals
Series:	Fixblock
Thread size:	M3
Storage temperature:	-40°C ... 80°C
Connection type:	screw connection, slotted screw
Tightening torque:	0.8 Nm
Operating temperature:	-30°C ... 40°C
Terminal width:	6 mm
Mounting method:	top hat rail N35, EN60715 TH35
Rated cross section:	4 mm ²
solid:	0.5 ... 6 mm ²
multiple wire:	0.5 ... 4 mm ²
Rated voltage:	380 V
Rated current:	32 A

Optional accessory



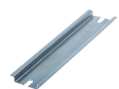
Identification labels, blank 100-piece sheet HSKM60U



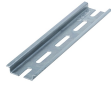
Identification labels, printed 100-piece sheet HSKM60_1-100



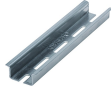
Insulated end section IWEPTR



Top-hat rail N35-7.5 mm N35-2



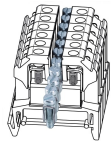
Top-hat rail N35-7.5 mm, punched N35L-2



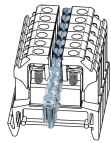
Top-hat rail N35-15 mm, punched N35L-2_15MM



End clamp bracket SK35



Jumper, 2 poles VB4-12



Jumper, 2 poles VB4-2

