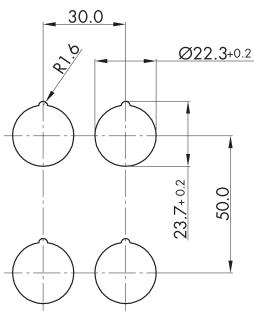
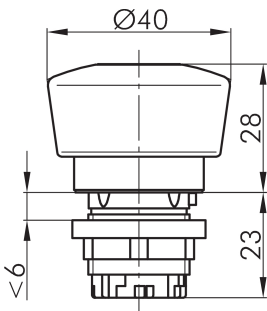




Mushroom head, momentary, with illumination and labelling option DXRSL40CRT

Description: incl. blank nameplate , inscription on request

Category: Mushroom pushbuttons
 Series: DUX-Basic
 Panel cut-out: $\varnothing 22.3$ mm
 Protection class: II (aislamiento protector)
 Degree of protection: IP65
 Switching function: momentary action
 Travel: 6 mm
 Illumination: si
 With labelling option: si
 Front bezel: matt chrome
 mushroom head: red
 Positive opening: no
 Shape: round



DESIGNPREIS
2006

NOMINIERT