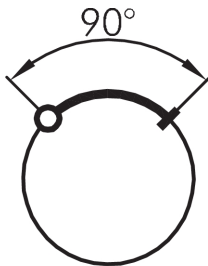
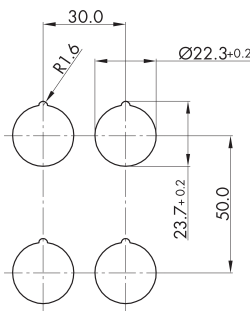
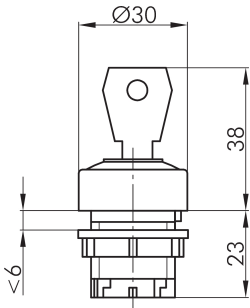




Key actuator, latching DXRSSACDG17

Description: including two keys other lock types on request

Category: Key switches (momentary/maintained)
 Series: DUX-Basic
 Panel cut-out: Ø 22.3 mm
 Protection class: II (aislamiento protector)
 Degree of protection: IP65
 Switching function: maintained action
 Illumination: no
 With labelling option: no
 Front bezel: matt chrome
 Ring: grey
 Positive opening: no
 Shape: round



DESIGNPREIS
2006

NOMINIERT

Legend

I= Switching position >=
Spring return O= Key
removable position

