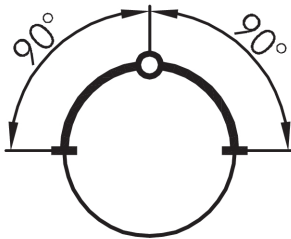
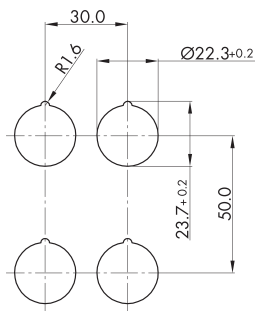
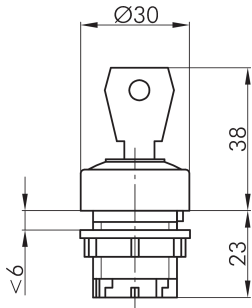




Key actuator with ring illumination, latching DXRSSALCGN13

Description:

including two keys available colour combinations:
 red ring ...RT... yellow ring ...GB... green ring
 ...GN... blue ring ...BL... clear ring ...KL... add
 code letters to type number, e.g. DXRSSALCRT13
 other lock types on request



DESIGNPREIS
2006

NOMINIERT

Category:

Key switches (momentary/maintained)

Series:

DUX-Basic

Panel cut-out:

Ø 22.3 mm

Protection class:

II (aislamiento protector)

Degree of protection:

IP65

Switching function:

maintained action

Illumination:

si

With labelling option:

no

Front bezel

matt chrome

Ring

green

Positive opening:

no

Shape:

round

Legend

I= Switching position >=
Spring return O= Key
removable position

