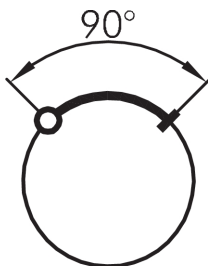
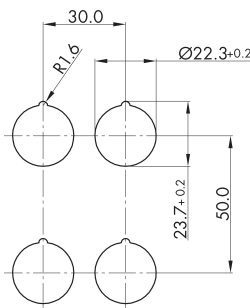
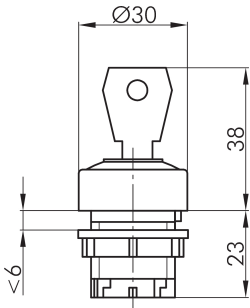




Key actuator with ring illumination, latching DXRSSALCKL17

Description:	including two keys
Category:	Key switches (momentary/maintained)
Series:	DUX-Basic
Panel cut-out:	Ø 22.3 mm
Protection class:	II (aislamiento protector)
Degree of protection:	IP65
Switching function:	maintained action
Illumination:	si
With labelling option:	no
Front bezel	matt chrome
Ring	clear
Positive opening:	no
Shape:	round



DESIGNPREIS
2006

NOMINIERT

Legend

I= Switching position >=
Spring return O= Key
removable position

