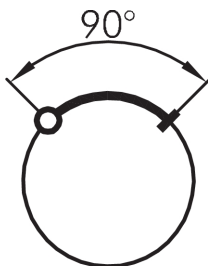
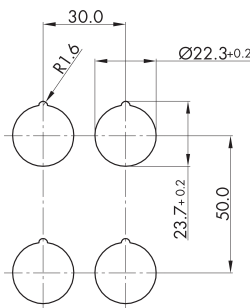
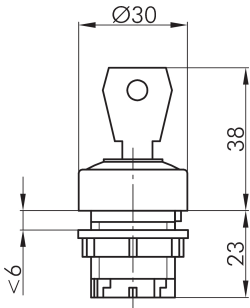




### Key actuator with ring illumination DXR55ALCRT17

Description:	including two keys
Category:	Key switches (momentary/maintained)
Series:	DUX-Basic
Panel cut-out:	Ø 22.3 mm
Protection class:	II (aislamiento protector)
Degree of protection:	IP65
Switching function:	maintained action
Illumination:	si
With labelling option:	no
Front bezel	matt chrome
Ring	red
Positive opening:	no
Shape:	round



DESIGNPREIS  
2006

NOMINIERT

#### Legend

**I= Switching position >=**  
**Spring return O= Key**  
**removable position**

