

### Mushroom head, momentary OKSM

Description: other mushroom colours on request

Category: Mushroom pushbuttons  
 Series: OKTRON®  
 Panel cut-out: Ø 16.2 mm  
 Protection class: II (aislamiento protector)  
 Degree of protection: IP65  
 Travel: 3 mm  
 Illumination: no  
 With labelling option: no  
 Front bezel: silver-coloured  
 mushroom head: red  
 Switching position: no  
 indicator:  
 Permissive contact: no  
 Anti-lock collar: no  
 Positive opening: no  
 Shape: square

### Optional accessory



ASI\_BTK25\_01



ASI\_BTK25\_02



AZ2N



AZ4I



AZ40



BZI



BZII



BZIK



BZIK\_AU



BZII\_AU



BZIK



BZIK\_AU



BZI\_AU



BZLI



BZLI5



BZLI5K



BZLI5K\_AU



BZLI5\_AU



BZLII



BZLII5



BZLII5K



BZLII5K\_AU



BZLII5\_AU



BZLIIK



BZLIIK\_AU



BZLII\_AU



BZLIK



BZLIK\_AU



BZLI\_AU



BZLO



BZLO5



BZLO5K



BZLOI



BZLOI5



BZLOI5K



BZLOI5K\_AU



BZLOI5\_AU



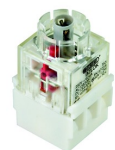
BZLOIK



BZLOIK\_AU



BZLOI\_AU



BZLOK



BZLOO



BZLOO5



BZLOO5K



BZLOO5\_AU



BZLOOK



BZLOOK\_AU



BZLOO\_AU



BZLO\_AU



BZO



BZOI



BZOIK



BZOIK\_AU



BZOI\_AU



BZOK



BZOO



BZOOK



BZOOK\_AU



BZOO\_AU



BZO\_AU





CO\_BTK25\_13



CO\_BTK25\_14



CO\_BTK27\_13



CO\_BTK27\_14



CO\_BTK30\_13



CO\_BTK30\_14



CT2



CTF



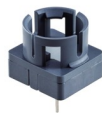
CTFS\_24RGB



CTFS\_24R\_G



CTFS\_24W\_B



CTF\_250



CTL2



CTLF



CTLF\_250



CTLP\_485



CTP\_485



CZTLP



CZTLP2



DIRL1V-R16



DIRL1VGB-R16



DIRL2V-R16



DIRL3V-R16



DIRL4V-R16



DP\_BTK25\_03



DP\_BTK25\_04



DP\_BTK27\_03



DP\_BTK27\_04



DP\_BTK30\_03



DP\_BTK30\_04



EC\_BTK25\_03



EC\_BTK25\_04



EC\_BTK27\_03



EC\_BTK27\_04



EC\_BTK30\_03



EC\_BTK30\_04



EN\_BTK25\_03



EN\_BTK25\_04



EN\_BTK27\_03



EN\_BTK27\_04



EN\_BTK30\_03



EN\_BTK30\_04



FRTFI



FRTFII



FRTFII\_AU



FRTFI\_AU



FRTFLI



FRTFLII



FRTFLOI



FRTFLOO



FRTFO



FRTFOI



FRTFOI\_AU



FRTFOO



FRTFOOI



FRTFOOI\_AU



FRTFOO\_AU



FRTFO\_AU



FRTIL\_C009



FRTIL\_C119



FRTI\_C007



FRTI\_C117



FRTOI\_C008



FRTOI\_C118





FRTOO\_C001



FRTOO\_C111



FRTO\_C006



FRTO\_C116



FRTP1



FRTP2



FRTP2\_AU



FRTP1\_AU



FRTPO



FRTPOI



FRTPOO



FRTPOOI



FRTPOOI\_AU



FRTPOO\_AU



FRTPO\_AU



IL\_BTK25\_05



IL\_BTK25\_06



IL\_BTK27\_06



IL\_BTK30\_06



PL\_BTK30\_03



PL\_BTK30\_04



PN\_BTK25\_03



PN\_BTK25\_04



PN\_BTK27\_03



PN\_BTK27\_04



PN\_BTK30\_03



PN\_BTK30\_04



QXABT



QXABT\_M



SIL16/1

