

Legend  
**I= Switching position >=**  
**Spring return O= Key**  
**removable position**

### Key actuator, maintained OKSSMA14

Category:	Key switches (momentary/maintained)
Series:	OKTRON®
Panel cut-out:	Ø 16.2 mm
Protection class:	II (aislamiento protector)
Degree of protection:	IP65
Switching function:	maintained action
Travel:	
Illumination:	no
With labelling option:	no
Front bezel	silver-coloured
Positive opening:	no
Storage temperature:	-50°C ... 85°C
Operating temperature:	-25°C ... 70°C
Mechanical life:	The mechanical life time depends on the type and number of contact blocks being used.
Shape:	square

### Optional accessory



ASI\_BZ



AZ2N



AZ4I



AZ4O



BZI



BZII



BZIIK



BZIIK\_AU



BZII\_AU



BZIK



BZIK\_AU



BZI\_AU



BZO



BZOI



BZOIK



BZOIK\_AU



BZOI\_AU



BZOK



BZOO



BZOOK



BZOOK\_AU



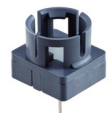
BZOO\_AU



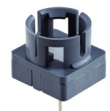
BZO\_AU



CT2



CTF



CTF\_250



CTP\_485



CZTP



CZTP2



DIRL1V-R16



DIRL1VGB-R16



DIRL2V-R16



DIRL3V-R16



DIRL4V-R16



ESMIC482



FRTFI



FRTFII



FRTFII\_AU



FRTFI\_AU



FRTFO



FRTFOI



FRTFOI\_AU



FRTFOO



FRTFOOI



FRTFOOI\_AU



FRTFOO\_AU



FRTFO\_AU



FRTIL\_C009



FRTIL\_C119



FRTI\_C007



FRTI\_C117



FRTOI\_C008



FRTOI\_C118



FRTOO\_C001



FRTOO\_C111



FRTO\_C006



FRTO\_C116



FRTPI



FRTPII



FRTPII\_AU





FRTPI\_AU



FRTPO



FRTPOI



FRTPOO



FRTPOOI



FRTPOOI\_AU



FRTPOO\_AU



FRTPO\_AU



QXABT



QXABT\_M



SIL16/1



SILH16/1

