

Legend

I= Switching position >=
Spring return O= Key
removable position

Key actuator, momentary OKSSMA28

Category:	Key switches (momentary/maintained)
Series:	OKTRON®
Panel cut-out:	Ø 16.2 mm
Protection class:	II (aislamiento protector)
Degree of protection:	IP65
Switching function:	momentary action
Illumination:	no
With labelling option:	no
Front bezel	silver-coloured
Positive opening:	no
Shape:	square

Optional accessory



ASI_BZ



AZ2N



AZ4I



AZ4O



BZI



BZII



BZIIK



BZIIK_AU



BZII_AU



BZIK



BZIK_AU



BZI_AU



BZO



BZOI



BZOIK



BZOIK_AU



BZOI_AU



BZOK



BZOO



BZOOK



BZOOK_AU



BZOO_AU



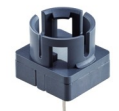
BZO_AU



CT2



CTF



CTF_250



CTP_485



CZTP



CZTP2



DIRL1V-R16



DIRL1VGB-R16



DIRL2V-R16



DIRL3V-R16



DIRL4V-R16



ESMIC482



FRTFI



FRTFII



FRTFII_AU



FRTFI_AU



FRTFO



FRTFOI



FRTFOI_AU



FRTFOO



FRTFOOI



FRTFOOI_AU



FRTFOO_AU



FRTFO_AU



FRTIL_C009



FRTIL_C119



FRTI_C007



FRTI_C117



FRTOI_C008



FRTOI_C118



FRTOO_C001



FRTOO_C111



FRTO_C006



FRTO_C116



FRTP1



FRTP2



FRTP2_AU



FRTP1_AU



FRTPO



FRTPOI



FRTPOO



FRTPOOI



FRTPOOI_AU



FRTPOO_AU



FRTPO_AU



QXABT



QXABT_M



SIL16/1



SILH16/1

