

Legend

I= Switching position >= Spring return

Selector head, momentary OKSTA

Category:	Selector switches (momentary/maintained)
Series:	OKTRON®
Panel cut-out:	Ø 16.2 mm
Protection class:	II (aislamiento protector)
Degree of protection:	IP65
Switching function:	momentary action
Illumination:	no
With labelling option:	no
Front bezel	charcoal
Shape:	square

Optional accessory



ASI_BTK25_01



ASI_BTK25_02



ASI_BZ



AZ2N



AZ4I



AZ40



BZI



BZII



BZIIK



BZIIK_AU



BZII_AU



BZIK



BZIK_AU



BZI_AU



BZO



BZOI



BZOIK



BZOIK_AU



BZOI_AU



BZOK



BZOO



BZOOK



BZOOK_AU



BZOO_AU



BZO_AU



CO_BTK25_13



CO_BTK25_14



CO_BTK27_13



CO_BTK27_14



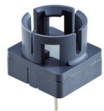
CO_BTK30_13



CO_BTK30_14



CT2



CTF



CTF_250



CTP_485



CZTP



CZTP2



DIRL1V-R16



DIRL1VGB-R16



DIRL2V-R16



DIRL3V-R16



DIRL4V-R16



DP_BTK25_03



DP_BTK25_04



DP_BTK27_03



DP_BTK27_04



DP_BTK30_03



DP_BTK30_04



EC_BTK25_03



EC_BTK25_04



EC_BTK27_03



EC_BTK27_04



EC_BTK30_03



EC_BTK30_04



EN_BTK25_03



EN_BTK25_04



EN_BTK27_03



EN_BTK27_04



EN_BTK30_03



EN_BTK30_04



FRTFI



FRTFII



FRTFII_AU



FRTFI_AU



FRTFO



FRTFOI



FRTFOI_AU



FRTFOO



FRTFOOI



FRTFOOI_AU



FRTFOO_AU



FRTFO_AU



FRTIL_C009



FRTIL_C119



FRTI_C007



FRTI_C117



FRTOI_C008



FRTOI_C118



FRTOO_C001



FRTOO_C111



FRTO_C006



FRTO_C116



FRTPI



FRTPII



FRTPII_AU



FRTPI_AU



FRTPO



FRTPOI



FRTPOO



FRTPOOI



FRTPOOI_AU



FRTPOO_AU



FRTPO_AU



IL_BTK25_05



IL_BTK25_06



IL_BTK27_06



IL_BTK30_06



PL_BTK30_03



PL_BTK30_04



PN_BTK25_03



PN_BTK25_04



PN_BTK27_03



PN_BTK27_04



PN_BTK30_03



PN_BTK30_04



QXABT



QXABT_M



SIL16/1



SILH16/1

