

design award
winner
2004

Emergency-stop head QRUV

Category:	Setas de emergencia
Series:	QUARTEX®-R
Panel cut-out:	Ø 22.3 mm
Degree of protection:	IP65 / IP67 / IP69K
Switching function:	maintained action
Illumination:	no
With labelling option:	no
Front bezel	yellow
mushroom head	red
Operating temperature:	-30°C ... 70°C
Mechanical life:	50,000 switching cycles
Shape:	round
Permissive contact:	no
Storage temperature:	-50°C ... 85°C
Foolproof:	si
Switching position	si
indicator:	
Anti-lock collar:	no
Release:	twist right or left

Optional accessory



ASI_SAW22A



ASI_SAW22E



DIRL1V-R22



DIRL1VGB-R22



DIRL2V-R22



DIRL3V-R22



DIRL4V-R22



DMTOSFA



DSTI



DSTO



DSTOSDE



DTI



DTO



ETR



ETR2



IRL1M



IRL1M_GELB



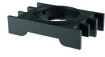
IRL2M



IRL3M



IRL5M



MKHR_3



MKTO



MTI



MTO



MTOSFE



NAS_22



NAS_22_548



SIL22/1



SILH22/1

